

The Organic Cultivator



A Publication of the Midwest Organic Services Association, Inc.

"The first of its kind with the organic operator in mind."



Vol. 3, Issue 1

www.mosaorganic.org

January 2005



Action Alert! US FDA to Rubber Stamp Transgene Contamination

The US Food and Drug Administration (FDA) published a proposal on November 24-2004 to allow experimental GM crops grown on 'test' sites to legally enter the food chain. The proposal is open for comment until January 24-2005.

The FDA proposal came in response to a 2002 Bush administration initiative in the wake of widespread contamination of US food supplies and exports in 200 with unauthorized Starlink GM corn, which continued to be detected in the US grain supply and in food shipments to Bolivia, Japan and South Korea as recently as autumn 2003.

FDA Commissioner Lester Crawford described the proposed policy as "a high priority for the Administration and the industry, to enhance public confidence, avoid product recalls, and provide an international model" for similar policies around the world.

The new policy sets out loose "safety assessment" guidelines under which a company may voluntarily consult with the FDA to have its experimental GM crop material deemed "acceptable" as a food contaminant.

The "safety assessment" consists of paperwork and two inadequate tests that the FDA estimates will take companies just 20 hours to complete; and does not include animal feeding trials or tests for unintended effects caused by genetic modification.

-continued on page 6

Victories for organic agriculture

OFRF Press Release 12-20-2004

The 2005 Appropriations Omnibus bill, signed by President Bush on Dec. 8, provides key organic agriculture programs with funding levels equal to amounts appropriated in 2004. Organic advocates are calling these funding measures a small victory during a difficult fiscal year, in which many substantial cuts have been made to federal programs.

"Level funding for these programs this year is evidence that Congress is increasingly aware of the value of organic farming to both farmers and consumers," said Brise Tencer of the Organic Farming Research Foundation (OFRF).

Congress allocates money annually to the U.S. Department of Agriculture and other federal programs, but only in recent years has funding been directed specifically to organic farming research programs. OFRF and allies on Capitol Hill worked hard over the past 10 months to secure renewal of these funds. The Organic Caucus, a bipartisan group of 35 members of the U.S. House of Representatives that formed in 2001, worked particularly closely with OFRF to protect this funding.

"Organic farming offers many opportunities for current and future farmers as more Americans want organically produced products," said Organic Caucus member Congressman Virgil Goode, R-Va., who serves on the House Agriculture Appropriations subcommittee.

-continued on page 6

Inside this issue:

Executive Directors Report	2
News Briefs	6
Welcome New Associates	8
Inspector's Desk	10-11
Classified Ads	18-19
Upcoming Events	17
Staff Member Profile	20

The Organic Cultivator

Published monthly by
The Midwest Organic
Services Association, Inc.
P.O. Box 344 - 124 S. Main Street
Viroqua, WI 54665
Phone: (608) 637-2526
Fax: (608) 637-7032
E-mail: mosa@mosaorganic.org

Office Hours: Monday - Friday
8am - 5pm

MOSA's Mission Statement

MOSA provides reliable and efficient verification and certification services to producers and processors in the upper Midwestern United States, consisting of Wisconsin, Minnesota, Iowa, Illinois, Kansas, Nebraska, North Dakota, South Dakota, Michigan, Indiana, Missouri and Ohio. MOSA is committed to maintaining a timely, courteous, accurate, transparent and consistent approach throughout the program and on a day-to-day basis.

Help Support MOSA!

Supporting Membership is \$50.00

Supporters receive a one-year subscription to the *Organic Broadcaster*, a bi-monthly, organic industry oriented publication as well as the MOSA newsletter, the *Organic Cultivator*, and MOSA program updates and information.

Visit us on the web!

www.mosaorganic.org

Executive Director's Report

David Engel, Executive Director



Perspective

New Year thoughts:

- Good judgment comes from experience, and a lot of that comes from bad judgment.
- The most destructive force in the universe is gossip.
- It is a new year, be new, never be afraid to try something new; remember, a lone amateur built the ark, while a large group of professionals built the Titanic.

Freeze on fees....again...and what fees pay for

For the 5th year in a row, MOSA will again NOT be raising fees charged to producers and processors. These fees consist of the certification/add-on fees, inspection fees and user fees. Since 2001, MOSA has charged a \$150 certification fee for producers and a \$400 certification fee for processors. These fees partially pay for office time spent handling the file. In addition, there is a \$50 add-on fee for producers to address special situations such as dairy, slaughter, on farm egg processing, and first-time applicants.

Inspection fees are based on cost, and this cost is figured at \$140 for a crop operation and \$170 for a livestock operation, for a 3-hour visit. Time spent at a farm over 3 hours is charged separately/in addition at \$30/hour. Expenses such as food, lodging and mileage are added to these base amounts. The \$200 inspection fee deposit usually covers the above costs, but if it does not, we bill the overage. If the inspection cost is less than \$200, we refund the difference.

User fees are very simple and specific, as they are based on *what you sell and when you sell it*. They are NOT based on what you think you will sell (a projection), and which you may or may not sell. This means that the \$150/400 certification fee and the \$50 add-on fees are minimal and just the basic fees. Again, these basic fees just cover part of the time the office spends in handling your file. When you sell organic product, then you pay a percent of the sales (.75% for producers, .5% for processors) *only on what you actually sell*. This means that you are NOT paying a larger amount up front at the beginning of the year, but you are paying smaller amounts throughout the year on a quarterly basis *based on what you sell*.

Some certification agencies advertise that they have no user fees. In reality, they do, but it is a fee that is paid all at once, up front, and it is based on what you think your sales will be for the year.

MOSA's fees are broken down to enable you to pay smaller amounts which cover services rendered and your sales, *when they happen*. MOSA is not the cheapest certification agency, but we are the best when it comes to service, our middle name. The office staff are able and very willing to answer questions and provide resources, as appropriate. If you have suggestions or questions about MOSA's fees or program, please contact me at 608-734-3273 (home office), 608-632-1226 (cell phone), or at dengel@mwt.net.

New year = new board

There are currently three spots on the MOSA board of directors which are open for nominations during the upcoming February election, with a total of five possible openings, if we increase the board to nine members (now at seven.) If you are or you know someone who is qualified and interested in performing this service, please contact me (numbers above), Jerry Clay (815-449-2668, jclay@cjrlinc.com) or Tim King (320-732-6203, timking7@rea-alp.com.) MOSA board persons cannot be certified by MOSA, and they must have an interest in the organic community and industry. They can be certified by other certification agencies, as currently Jerry Clay and Jim Goodman are (OCIA and FVO, respectively), and the time commitment for being on the board is approximately 30 hours per year. Feel free to call and talk with any board person listed on page 3 of this newsletter to get a perspective on what it means to serve on the board.

Advisory Committee Nominations Due

MOSA is accepting nominations for two Advisory Committee positions. The primary purpose of the AC is to review and recommend to the MOSA Board of Directors new and revised MOSA Policy – requirements/language found in the Program Manual. AC members should have the ability to work with detail, clear writing, integrative thinking, analytical, strong listening, verbal, and interpersonal skills, and a willingness to serve on a voluntary (stipend) basis. Access to personal workspace that ensures confidential handling of information is required. Up-to-date computer capabilities are helpful. AC meetings are usually by teleconference one or two times per year, most often in the late fall. Serving on the AC is a nice way to have direct input into the MOSA Certification Program.

This year, we're accepting nominations for the Processor/Handler and Industry/Technical representatives. The Process/Handler representative must be owner or operator of a MOSA-Certified processing or handling operation. He or she may additionally hold a degree related to food technology with emphasis on organic production systems. The Industry/Technical representative must NOT be an owner or operator of a MOSA-Certified crop production operation, but may be certified by another agency. He or she may also have a working knowledge or expertise in organic certification, organic production systems, or in the organic regulatory environment. Examples of experience, expertise or interest other than these can be considered if explained in writing, as a part of the nomination process.

Please consider if you would like to serve as an AC representative in either the Processor/Handler or Technical representative roles, or consider other persons that may be good representatives for these stakeholder groups. Written nominations including a description of qualifications and areas of expertise must be received in the MOSA Office by January 20th.

Canadian Labeling Requirements

MOSA has received a notification from CAQ, the organic authority in Quebec, which will be of interest to any MOSA Associates that are exporting fresh agricultural produce to Quebec in Canada. *All Associates must be in compliance with these Quebec labeling requirements, as applicable, by January 1, 2005.* We're not aware of any MOSA Associates to which this applies, but we're covering our bases here just in case. Please note that for Quebec export, the certified operator must individually label perishable foods, using stickers or other methods. When such products cannot be individually labeled (ex: broccoli bunches), then the unit of sale must be labeled. The certified operator and MOSA must be identified on aforementioned labels. In exceptional cases, when labeling as noted above cannot be affixed to each product unit, the unit must be packaged and the label placed on the package, with package label including the product name, batch number if applicable, certifier's name, trademark, production company identification, and country of origin.

All MOSA operators are reminded that all labels must be approved before their entry into the marketplace, whether domestic or foreign. In this Quebec labeling case, MOSA's CAQ recognition could be lost if Associates ship product to Quebec with noncompliant labels. Please contact our office with any questions.

MOSA Board of Directors

Carla Wright, President
8370 Indian Trail Rd., Cross Plains, WI 53528
savanna@chorus.net
(608) 798-2954

Judith Scoville, Vice President
2093 Jefferson Ave. St. Paul, MN 55105
scovillej@msn.com
(651)690-0883

Mrill Ingram, Secretary
217 N. 3rd St., Madison, WI 53704
mroll@earthlink.net
(608) 242-1836

Tim King, Treasurer
15261 CTY 38, Long Prairie, MN 56347
timking7@rea-alp.com
(320) 732-6203

Jerry Clay, Director
4648 E. Farm School Rd., Dakota, IL 61018
jelay@ejrinc.com
(815) 449-2668

Leslie Cooperband, Director
4410 N. Lincoln, Champaign, IL 61822
lrcooperband@wisc.edu
(217)643-2314

Jim Goodman, Director
E 103 CTH Q, Wonewoc, WI 53968
r.j.goodman@mwt.net
(608) 489-2291

MOSA Staff

Dave Engel, Executive Director
dengel@mwt.net

**Steve Walker, Certification Program Manager,
Processor Certification
Coordinator**
spwalker@mosaorganic.org

**Diane Collins, Certification Review Manager, Farm Certi-
fication Coordinator, Surveillance/Compliance Coordinator**
dianecollins@mosaorganic.org

**Susan Perry, Office Manager,
Human Resources Manager**
susanpm@mosaorganic.org

**Jo Anne Shrum, Quality Manager,
Computer Administrator, Document Control Officer,
Communications Coordinator**
joshrum@mosaorganic.org

Cate Irsfeld-Eddy, Certification Staff
cateie@mosaorganic.org

Mary Wilson, Staff Inspector
miwilson@mosaorganic.org

**Jeff Wideman, Staff Inspector,
Inspector Coordinator**
wfam@mwt.net

**Bonnie Wideman, Staff Inspector,
Inspector Coordinator**
bwideman@mosaorganic.org

**Dee Malsack, Events Coordinator,
Newsletter Editor**
dmalsack@mosaorganic.org

The Wisdom in Being Still

By Stephen Walker, MOSA Certification Program Manager

We've experienced it from all directions lately, the rush and hustle of the holiday season. Whether we've taken part in the marketing frenzy that the holidays have come to represent for so many, or tried hard to honor the origins of the season, there's a calm in the air now that the holiday season is mostly passed. At last, it's easier to settle and reflect. I suspect that many involved in the organic community are no strangers to the rewards in "stopping to smell the roses". In fact, taking time to attend to the subtle is key to successfully understanding and properly managing the diversity inherent in an organic system. I encourage all to enjoy the winter quiet, and envision still reflection as being a necessary part of productivity.

But in a busy season and in times of rapid change, it's a challenge to find time for reflection. Over the winter holiday season for the last several years, I've found myself increasingly frustrated with the stress of the holiday rush. I've felt extremely challenged by the seasonal expectations - to buy gifts on a limited budget, to get in all of the holiday activities in limited time, to create "magical memories" for my kids within a calendar-imposed deadline. Unfailingly, the spirit of the season finds its way to my heart, but along the way I tend to put up a weak defense with an element of bah-humbugness. This year, I found the season, or the season found me, in fleeting quiet moments along the way—when I was put on hold while on the phone and hearing seasonal music from the other end, in a walk home from work amidst the decorated street lamp posts along a traffic-less Viroqua Main Street, reflecting on sparkling powdered snow and the sounds of crunching hay while feeding horses by moonlight. I came to realize that my seasonal frustration has its roots in my desire for needed stillness at this time of year. Indeed, the quiet is inherent in the seasonal stories and traditions in many cultures—a babe born in a stable, the lighting of a menorah, the long nights, the renewal of earth under a blanket of snow. These conflict with the bombardment of ads for 6 AM discount sales at the local department store, and the "have-to's" of the season.

The assault on the senses is not at all limited to the holidays. We're continually seeing technological advances that push our boundaries, compress time, and challenge our perceptions of what's normal. This message came strongly at a conference we attended in early December. MOSA was represented at the Midwest Food Processors Association Annual Convention in La Crosse on December 1st and 2nd, 2004. Two of the keynote speakers there were somewhat challenging toward the organic status quo. We attended this conference in an effort to reach out to a more mainstream crowd, not anticipating feeling as if we'd entered the lion's den. The morning keynote speaker on day one, Dr. Jay Lehr, was

billed as a "proponent of sane environmental regulation that does not overly distort problems to the economic detriment of society." (On the other hand, some would say he far underestimates environmental challenges in order to maintain complacency among those who should instead be alarmed.) In his pep talk for the mainstream, he drew specific attention to MOSA's presence at the conference. While he didn't have anything negative, per se, to say about organics, by implication he lumped us together with "enviros" who throw up red flags that create unnecessary regulatory hoops. Lehr also negated global warming citing as evidence that not ALL glaciers have been monitored for melting, and called genetic engineering "the safest science", predicting that in 15 years, except for organics, no farm would be planting seed that is not genetically modified. He also predicted that organics would allow planting of some GE crops in that same time frame. Well, we'll see... Later, it was gratifying to have some in attendance confide that they thought he was off-base, and likely unaware that most of the food processors at the conference already had organic projects they were pursuing.

"In a busy season and in times of rapid change, it's a challenge to find time for reflection. Over the winter holiday season for the last several years, I've found myself increasingly frustrated with the stress of the holiday rush"

A day 2 keynote speaker was Richard Thieme, speaking on the topic of "making sense of uncertainty". He encouraged those who want to be successful in their endeavors to not just think outside the box, but maybe to consider getting into a bigger box. He noted that as we now live in a trans-planetary culture, thinking outside the box also means paying attention to what's happening at the edges, as events change, and as benchmarks change. As everything in the periphery changes, and outside structures cannot offer security, Thieme stressed the importance of finding security from within, of having a personal vision from which to make business decisions. In looking at how things change, Thieme quoted George Bernard Shaw, who stated, "All great truth begins as blasphemy". Thieme also discussed the issue (and some benefits) of genetic modification, and noted that with increased understanding of nutraceuticals, the distinction between what is natural and what is artificial is not real. He stated all is just made up of unself-conscious molecules. He predicted genetics will go everywhere we design them to. This begged the following questions: 1-where do we draw the line? 2-what does it mean to be human? And 3-how do we live in a world with no walls? He concluded with his basic point, that in the midst of rapid change it is important to remember your values, your motivation for doing what you do, your intent.

After his talk, I asked Thieme, once an Episcopalian priest, if he felt there's a basic morality that won't change. Are there absolutes? It seemed to me that there must be absolutes of

MOSA Annual Meeting Set

This year's annual Associate meeting will again be held in La Crosse, WI, on the Thursday beginning the Upper Midwest Organic Farming Conference, at the same La Crosse Center location. As many Associates already come to La Crosse for the conference, it's hoped this meeting time and place will encourage attendance and provide for scheduling convenience. Agenda items for this meeting typically include Board of Directors' elections and a review of bylaws (no proposed bylaw changes were received this year). Often, additional educational items are presented. This year we are looking forward to a presentation/slide show on organics in Cuba. Please mark your calendars for Thursday, February 26th, and keep an eye open for forthcoming details as to exact location, agenda, etc.

With the advancement of all the equipment a farmer doesn't always have time to play with each cow to lower cell count if it is high. We are in a new type of farming. More cows means problems. We had a high cell count but with the help of Ana-Tech's Dairy Pak-600 Plus we dropped our cell count to get an extra dollar a hundred. With the milk price so low you need an extra dollar in order to stay farming!

Green Ridge Family Farm
Hillpoint, WI

BECAUSE EVERY DROP COUNTS....



ASK ABOUT OUR SPECIALS!!

ANA-TECH
714 3th Street • PO Box 417
Monroe, WI 53566

Visit us @ www.ana-tech.net • (800) 909-1011

160790_2-12-04

The wisdom of being still-continued from page 4

right and wrong. Just because we're capable of doing something doesn't mean it's right. He concurred, noting we must find that right and wrong on an individual basis (perhaps with guidance from God or from our mothers).

From an organic certification perspective, in part, we are in the business of legislating values. For example, in the organic standards, based in a precautionary principle, all genetic modification is prohibited. Perhaps over time, some genetic modification methods may be found to be less risky and more beneficial than others. By no means would I go so far as to say Lehr's prediction that organics will someday allow some GMO's will become true, but as we each remember and define who we are—our motivations, our intents—the organic community will know how to properly react to this and other changing boundaries. It seems this remembering and defining requires a reflective stillness. And what a better time than now? 'Tis the season. The fields are still quiet, the nights still long. It's a time for reflection, rejuvenation and New Year's resolution. I encourage you to remember what draws you to this organic effort, and reflect on the essence of that which rewards you. Stay conscious. Plan. Define your absolutes. Enjoy the stillness, and in it find wisdom. Here's wishing you a time of valued reflection on what the future brings, and a happy new year based in integrity.



Total Herd Management
NATURAL
SOLUTIONS
for the
ORGANIC
PRODUCER

IMPRO Products, Inc

3 Allamakee At
Waukon, Iowa 52172

800 626 5536

rjhdvm@rconnect.com

Organic snacks prove to be fast-growing food market

In a recent manufacturer survey conducted for the Organic Trade Association, the snack food category was the second fastest growing segment in 2003 (meat and poultry were first), with a 29.6 percent growth in sales over the previous year. Overall, the organic products industry has continued to grow at a rate of more than 20 percent for the past 12 years, and is now a \$10.8 billion business encompassing both food and non-food products. "Although we advocate that consumers choose a balanced diet full of fresh organic fruits and vegetables, protein, grains and healthy fats, the reality is that snack foods aren't going away," says Katherine DiMatteo, executive director of the Organic Trade Association. "Having convenient certified organic snack food options provides children and adults alike with foods that are grown without the use of toxic and persistent pesticides or genetically modified ingredients, and

that do not contain artificial flavors or hydrogenated fats." In a recent online survey conducted by USA Today, nearly 37 percent of those surveyed indicated they would purchase an organic version of their favorite snack if it provided nutritional benefits.

ATTRA website-Posted December 22, 2004

Organic Farmers' Survey

Final results from the Fourth National Organic Farmers' Survey conducted by the Organic Farming Research Foundation show that 94 percent of respondents run single-family operations, family farm partnerships, or family farm corporations. More than half (54 percent) of those participating in the survey farm fewer than 50 certified organic acres, with another 25 percent reporting farming between 50 and 179 certified organic acres, and 21 percent reporting farming 180 certified organic acres or more (www.ofrf.org).

Professor canned for releasing paper on

corn contamination



A well-respected and popular professor at the University of California in Berkeley has been fired after publishing a scientific paper regarding the uncontrolled contamination of irreplaceable native Mexican corn varieties by genetically engineered corn. Dr. Ignacio Chapela, whose corn contamination article was published in the science journal "Nature," was denied his tenure due to pressure from the biotech company Monsanto. The UC Berkeley tenure review panel had actually voted almost unanimously to approve his tenure. Professor Chapela has been told to have his office cleaned out by December 31.

Organic Consumers Association website-12-23-2004

Action Alert

-continued from page 1

This would then give biotech companies the legal cover to allow their experimental GM crops to enter the US food supply. The US biotechnology and grain industries are already calling on the US government to "vigorously promote global adoption" of this policy.

It is already virtually impossible to test for the presence of experimental GM food crops in foods imported from or processed in the US, because over two-thirds of US field trials of experimental GM crops involve one or more genes classified as confidential which therefore cannot be detected.

Bill Freese, research analyst with Friends of the Earth (US) said, "FDA's new proposal has nothing to do with food safety, it's designed to provide biotech companies with legal cover for contaminating the food supply with experimental biotech traits. Such contamination has happened in the past and has cost biotech companies more than \$1 billion." Aside from Starlink, another experimental GM corn containing a pharmaceutical sprouted in a field of soya one year after the trial crop had been harvested. ProdiGene, the makers of the GM corn, paid our millions of dollars in damages and a \$250,000 fine, although the product never reached the food chain.

Adrian Bebb of Friends of the Earth Europe added: "Because of the secrecy behind experiments in the United States, no one—not food companies, not even

governments—will be able to test food products or food imports for contamination because they won't know

what to test for. This will leave consumers worldwide exposed to new risks from genetically modified foods." Those experiments that are known to the public include crops with radically altered nutritional content for use as animal feed or anti-fungal compounds that resemble food allergens. Others include crops engineered to be resistant to chemical herbicides, produce their own insecticides or have sterile pollen or seeds. The FDA is also considering a similar proposal to allow residues from experimental pharmaceutical crops to enter the food chain.

Juan Lopez from Friends of the Earth International said: "The Bush Administration, with the active support of the biotechnology industry, is about to force their untested genetically modified experiments into the world's food supply. This proposal should be ringing alarm bells in every consumer, every food company and every food agency of the planet."

In line with the same policy proposal, Prof. Joe Cummins at the University of Western Ontario points out, "USDA (US Department of Agriculture), which regulates organic certification, has proclaimed that organic food crops polluted with modified genes from wind-borne pollen released from neighboring farms will still be certified as organic food."

Victories from page 1

Organic provisions in the \$388.4 billion Fiscal 2005 omnibus bill included \$2 million for Organic Standards (the National Organic Program at the USDA), \$1.89 million for the Organic Transitions research grant program, and \$500,000 for collecting data on the scale and growth of organic agriculture in the United States.

"Organic farming is becoming more widespread every year, and it's critical that we support that growth by funding organic programs," said Congressman Sam Farr, D-CA, a strong Congressional advocate for organics standards.

Thanks to the help of Representative Farr and California Sen. Dianne Feinstein, OFRF was able to secure an additional \$125,000 for expanded research at the USDA Agricultural Research Service (ARS) station in Salinas, Calif., the only ARS research station with a dedicated organic research scientist.

"The increased funding to the Organic Minor Crops project at Salinas places dollars where they can be most effective," said Jim McCreight, Research Director at ARS-Salinas. Dr. Eric Brennan's organic research (the focus of the additional funding) emphasizes cover cropping systems and crop rotations for organic strawberry and vegetable producers in California's central coast.

While some additional funding requests made by OFRF for USDA organic programs were not appropriated, Congress included language that directs the USDA's Agriculture Research Service to better serve organic producers and consumers: "The Committee encourages ARS, when appropriate, to direct research resources in a manner

that reflects the growing interest in organic production and the need to provide enhanced research for this growing organic sector."

To view a full list of organic program appropriations for the 2005 fiscal year, visit <http://www.OFRF.org/policy>.

For further information on the Organic Farming Research Foundation, please refer to our website at <http://www.ofrf.org/> or call 831-426-6606.



Stir Fried Broccoli and Carrots

- 2 tsp ginger
- 1 clove Garlic-chopped fine
- 1 1/2 cup broccoli flowerets-small
- 2 med carrots-sliced thin
- 1 small onion-diced
- 3/4 cup chicken or veg. broth
- 1/4 tsp salt
- 1 tbsp cornstarch
- 1 tbsp water-cold
- 1 cup mushroom-sliced



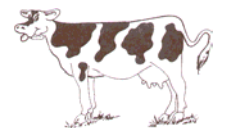
Prepare a 12" skillet with cooking spray, heat until hot
Add ginger and garlic; stir fry about 1 minute or until light brown.
Add broccoli, carrots, and onion; stir fry 1 minute
Stir in broth and salt; stir into vegetable mixture.
Cook and stir 10 seconds or until thickened. Add water and mushrooms; cook and stir 30 seconds.

"Cooking is an art and patience a virtue...Careful shopping, fresh ingredients and an unhurried approach are nearly all you need. There is one more thing—Love. Love for food and love for those you invite to your table."

-Keith Floyd from "A Feast of Floyd"

KOW Consulting Association

Dairy nutrition from the soil up,
fully independent



Keith Ostby, CCA, Dairy Nutritionist
Ph: 608-328-4412 Fax: 608-325-2093

Tom Weaver, CCA, Dairy Nutritionist
Ph: 608-762-6948 Fax: 608-762-6949

Soil, agronomy, and nutrition advice all for the cost of *quality*
value priced dairy minerals/vitamins

No other fees, no snake oil sales.

Dollars and \$ense

Well here we are another quarter ended and its time to report fourth quarter user fees. You will be getting your fourth quarter user fee statements in the mail soon, with statements included to let you know if any other fees are due. Please be prompt in reporting whether you have any user fees. Even if you have no user fees to report you must let us know. You can fax, phone, or email us your information.

On a new year note, we would like to welcome **Katie Starr** to MOSA. Katie will be our new accounts manager and will be the one to whom you will direct any questions you have about your account or reporting your user fees (or lack of) to. She will also be the person writing this column in the future. Please join us in welcoming Katie aboard!

MOSA would like to wish all of you a **Happy New Year**, may 2005 be a great growing year for all of you!



Katie Starr

Phone: (608) 637-2526
 Fax: (608) 637-7032
 E-mail: mosa@mosaorganic.org

On the road with MOSA



MOSA will be attending many conferences in the month of January, and we hope to see some of you there. We thought you might like to have a list of our planned trips so you will know where to look for us.

- 12-13 Illinois Organic Conference in Bloomington/Normal, Illinois
- 14-15 Practical Farmers of Iowa, Des Moines, IA
- 19-20 Midwest Farm Show, La Crosse, WI
- 21-22 Minnesota Organic and Grazing conference
- 28-29 Midwest Value added Conference, Eau Claire, WI



Hope to see some of you at one or more of these shows.

MOSA Welcomes New Associates

- Jon Danckwart, *Danckwart Feed & Grain*, Kellogg, MN
 Nelson H. Jamison, Hillsboro, WI
 Jimmie & Anita Sparks, *Rolling Thunder Farms*, Pine City, MN
 Scott & Debby Westenberg, *Westenberg Dairy Farm*, Wauertown, WI
 Kevin & Diane Shult, Sheldon, WI
 Nam Song, *Song's Mushroom Farm*, Readstown, WI
 Christopher Heckel, *Heckel Farms*, Marshfield, WI
 Janet Hedtcke, *UW-Madison/Arlington Ag Research Station*, Madison, WI
 Jan & Mary Knutson, *K-Farms*, Clayton, WI
 Steven Pechacek, *Organic Family, LLC—dba Organic Choice*, Pierce, WI
 Kent Wolf, Hillsboro, WI



The Low Cell 80 Advantage

- High Cell Count? Low Production?
 Foot and Lameness Problems?
 Animals Eating Dirt? Poor Digestion?
 Unhealthy Calves?

Low Cell 80 complements or replaces a dairyman's current feeding program by optimizing nutrient utilization and alleviating sub-clinical deficiencies, thereby enhancing health and condition.

- **Low Cell 80** contains over 60 naturally chelated trace minerals
 - **Low Cell 80** contains 5 strains of live (viable) naturally occurring microorganisms
 - **Low Cell 80** contains 5 digestive enzymes
 - **Low Cell 80** contains the major minerals
 - **Low Cell 80** contains Plant Charcoal and Redmond Salt.
- 50# Bags

DISTRIBUTED BY
Centers for Natural Living
 N6324 County Road G
 Scandinavia, WI 54977

Order Desk: 800-279-0260



Forthcoming Program Manual Changes

By Steve Walker, Certification Program Manager


Well, the results are in. Following this year's Advisory Committee recommendation process and approval by the Board of Directors, we have finalized changes for the revision of the MOSA Program Manual for 2005. The changes noted below mostly come in reaction to points raised during our 2004 internal quality system audit. Several other proposals come from periodic realizations that the Program Manual language is not adequately reflective of newly-emerging certification scenarios. No proposals were received from Associates this year. Some of the changes simply ensure that the Program Manual properly reflects language stated in some sections of the National Organic Standards. Here's a nutshell overview of forthcoming changes...

- We have clarified Program Manual language to note differences between minor and major noncompliances. A minor noncompliance, clarified to be synonymous with the term "certification condition", does not require notification of the National Organic Program (NOP). A major noncompliance does require NOP notification. Where the term noncompliance is used in the Program Manual, this will be clarified to refer to minor noncompliance, major noncompliance, or either, as appropriate.
- We have revised our procedures for applicant/Associate responses to adverse certification decisions. The revised Program Manual will remove all references to the term "reconsideration", instead referring only to "rebuttal", consistent with the National Organic Standards (NOS). An applicant/Associate may rebut identified noncompliances, but cannot rebut Notifications of Proposed Suspension or Notifications of Proposed Revocation. In these certification decisions, an Associate retains the right to request mediation or file an appeal with the NOP. Rebuttals, when allowed, shall be heard by the full Certification Review Team. The Advisory Committee is removed from having a role in decision reconsideration.
- We have put some language toward a definition for on-farm processing. This may be helpful in assessing when additional on-farm processing fees/forms shall be required.
- We have expanded our commercial availability policy to clarify that for multi-ingredient organic products, minor ingredients may only be non-organic if an operator demonstrates through due diligence that organic equivalents are not commercially available
- We've added language to the Emergency Pest and Disease Treatment section to consider treatment of gestating breeder stock. This is consistent with language in the NOS.
- To address the fact that unannounced inspections often generate little or incomplete information, we've adjusted policy to allow an inspector to provide verbal notification of an unannounced inspection, if the presence of the operator is necessary to complete the inspection, and if notification will not affect the information sought.

- We've clarified fee assessment procedures for cases where an Associate wants to add products/services to his/her certificate. The administrative fee and requirement for submitting an Additional Product/Service Affidavit may be waived if the certification review for the added product/service coincides with the annual certification update process.
- To address confusion over Private Label Arrangement requirements, we've begun development of, and will have available a Private Label Plan Questionnaire, which will better clarify what's required.
- We've established a policy for the certification of Grower Cooperatives, for groups of producers who are in close proximity to one another, whose farms are uniform in most ways, and who are organized under one management and marketing system. The Grower Cooperative Certification Program is intended for use for certification of cooperatives or groups of producers located in a geographical or social region, whose crops are marketed collectively. Grower cooperatives are comprised of numerous small producers who are certified as one entity, rather than being structured as sole proprietorships.


Please call the MOSA office if you'd like details on the above.

Call For



**ORGANIC
CATTLE & HOGS**

*Due to the expanding market opportunities,
CROPP/Organic Valley Family of Farms
needs certified organic cattle and hogs*



Family of Farms

We support sustainable prices for organic cattle & hogs

**Please Contact: Allen Moody at 888.809.9297
E-mail: allen.moody@organicvalley.coop**



From the Inspector's Desk

By Bonnie Wideman, Inspector Coordinator

In the last newsletter I wrote an article about poultry record-keeping. I was pleased as could be to go out on a poultry inspection last week and find that my suggestions had been helpful to a new egg producer in setting up his record-keeping system. This month I would like to share some observations about the basis of all organic record-keeping: the organic farm plan, also called the “dreaded paperwork we have to do every year.”

When we inspectors go out on farm inspections we have the annual short form updates and the long forms in the file. Often, the box on the short form is checked that indicates “No changes to any farm plan area listed below” or “No changes to any livestock plan area listed below.” As the inspection progresses sometimes there have been so many changes from what the long form describes that it’s practically obsolete. This is the extreme situation, and I don’t want to imply that it’s always the case! Some folks carefully note their changes each year, so that the farm and livestock long forms—in combination with all the short form updates that have been done each year—really do present an accurate picture of that particular organic farm/livestock operation. Let’s look at the short form update categories and see what changes should be noted:

(from the Update Livestock Plan—Short Form)

Operation profile/Livestock source Have you added any new types of livestock to your operation? If you’re requesting slaughter certification and you didn’t before, you’ll need to note this and provide some information in the handling for slaughter section. If you have added a different kind of livestock (like a dairy adding layers), a whole new long form is needed for the new type of livestock.

Split/parallel production This area is often overlooked on the long form: any livestock getting conventional feed or treatments should be listed here (note: buffer harvests are conventional).

Living conditions Put up any new livestock facilities? Any changes in bedding used? Any changes to how many hours of outdoor access provided?

Manure Handling Any changes to how manure is handled or a change to manure handling facility?

Feed ration Check and see what your rations were when you filled out your long form: Buying or not buying something now that you were in the past? Calf feed—homegrown or purchased? Are your rations listed for all age groups if they’re fed differently?

Pasture management Are your pastures listed correctly? Note that field #s and acreages are needed on field histories for pastures. Do any frost seeding? Any buffer changes?

Feed storage Put up any new bins?

Water quality and use What were the most recent water test results? Any additives to livestock water?

Health management This is the area which probably is the most difficult to keep up-to-date in terms of any health products used—there is a section for “treatments” on the update. Generally speaking, keep in mind that any products that go on or in your livestock should be noted somewhere in your paperwork—whether as health treatments, feed supplements or pest control products.

Recordkeeping Plan Any changes here to how you identify your animals or keep records on them?

Handling for slaughter If you’re selling any livestock as organic slaughter, questions include who you sell to, what facility livestock is slaughtered at (certified for organic slaughter?) and how animals are transported.

Milk handling plan One change that’s often missed is a change in animal cleaning products.

Egg handling and packing plan Are you selling eggs directly to consumers or to an outlet that resells them? You may need a handling plan. Any labels used?

-continued on page 11

Marketing plan Usually not an area of many changes.
Other's (specify) Here's where you might note that you hired a full-time herdsman so that you can spend your winters in the Bahamas!
(from the Update Farm Plan—Short Form)
Farm maps: Any new maps this year? New FSA maps? For newly rented or acquired land? Do you have a current map on file for storage facilities? If you submit maps with your crops listed annually, submit new ones each year. Otherwise, unless you have changes or just want to improve your maps, MOSA has a copy of your farm map in your file.
Soil fertility management Any changes here from your long form? If so, please note and send in ingredients lists for any off-farm inputs that aren't OMRI-listed or have these ready for your inspection. Receipts for purchases should also be available.
Compost / Manure management Not many of you are making "organic" compost, but for those of you who are, you need to have your documentation of process used ready for inspection (plus it should be described on the farm plan). If you buy compost and it's not OMRI-listed, verification of composting process is needed.
Conservation practices: Any changes here? New contours, farm pond, rip rapping, fences to limit livestock access to streams? Anything new with cover crop usage? Changes to soil erosion issues you may deal with?
Water quality and use Any changes to water use on crops? A new water test to add to your file?
Crop rotation Check the rotation listed on your long form and subsequent short form updates. Have there been any changes?
Weed management plan Any changes to how you deal with weeds? New equipment? Cover crops?
Split or parallel production (Split production is an organic crop of one kind and a conventional crop of another; parallel production is both organic and conventional crops of the same type. Note: buffer harvests are conventional.) Is this area complete on the long form? If you do have conventional production, it should be described each year and there is a place on the farm short form to do this.
Equipment Any changes here? Check to see if your listing is complete on the long form. Note: custom equipment is supposed to be listed here, too.
Harvest plan If you have a custom operator come for harvesting, is name and address current on the farm plan?
Post-harvest handling Check it out on the long form—all up-to-date? Note: for farmers who raise their crops for their own livestock, the only "post-harvest handling" may be feed grinding.
Crop storage Are all your storage places (bins, cribs, silos, haymows, pit silos, lots where round bales are stored) listed and up-to-date?
Crop transportation Any changes? Keep in mind that some form of clean transport documentation for organic crops/feed bought or sold will need to be available for inspection.
Type of marketing/product labels Most of you don't use labels, but for those who do, does MOSA have a copy of your latest product label or logo (on advertising or forms you use)?
Record keeping system Check out this section on the long form. Are there new items added to your record-keeping lineup? Are there boxes checked that really don't reflect what you do?
Additional verification needed Are you wanting any type of certification besides NOP? You need to let MOSA know just what you need in this area so your inspector can be prepared, too.
Other/s (specify): What else could there be???

Well, hopefully these comments have been somewhat helpful for some folks. When the inspection season slowed down and I had some time to look over MOSA's many forms for possible changes that might make things clearer for both producers and inspectors, I was surprised that there just weren't that many areas where I thought things could be changed. You might see some changes if you're familiar with the forms and go over them with a fine-toothed comb, but pretty much they'll be the same next year. And, they'll be arriving in your mailbox before you know it! First, the seed catalogues, then the organic paperwork.

A lighthearted question and answer session with Diane Collins

(Certification Review Manager)

For the Chinese, 2004 was the “Year of the Monkey”. For me, it was the “Year of the Major Non-compliance.” One week there was a new major non-compliance almost every day. My mind wandered as I thought of more pleasant ways to spend my time and earn a living. Watching paint dry, door-to-door anvil salesperson, underwater welding, any of them would have been an improvement (except McDonalds and Wal-Mart). I snapped out of it in usual fashion when a couple of MOSA farmers turned me back around.

The phone rang, and it was a man who just got certified for the first time. He wanted to say thank you. He was humbled by the fact that he was granted certification, and that he was officially certified organic. He told me how much it meant to him and his wife, and now that they were retired, they were looking forward to starting the next stage of their lives and organics was part of their dream. And then a woman called. Her husband had just died, and she didn't know how she and the kids were going to carry on, but they had to because organic farming was *their* dream, and they didn't know any other way.

Then I think of you, the vast majority of MOSA Associates who walk the organic path every day, even when it takes more time and money. The families that work in town for years, saving their pennies, so they can quit their job in town to support their family on the farm. And the family that sells their farm, to move to Vernon County because there's an organic market. And the farmer who called up to say, “I've been farming for 20 years and I used organic corn seed this year and had my best crop ever in my history of farming! The yield was 150 bushels an acre!” Every farmer has their story.

And part of *my* story is that I'm Irish, and humor is mandatory. One late night, I was pretty much at the end of my tether. I was tired of looking at files and hearing the same old song. To save my sanity, I came up with some 'lighthearted answers to common situations that came up many times throughout the year.

1. Q: You didn't get your additional information or contract in by the deadline. What do you do?

- A. Say you'll send it. Then when MOSA contacts you, say you *will* get it in. You're a farmer and the last thing you want to do is paperwork at night. You procrastinate and stew about it, like taxes. You finally turn over a new leaf (always on the weekend) by calling MOSA first thing Monday morning to turn yourself in. MOSA gives you an extension and everything's alright.
- B. Pretend like you sent it. Then when MOSA contacts you, say you sent it and blame it on the postal service; after all they're an easy target. Then when *that* deadline passes, we give you a courtesy phone call, letter, email, fax, home visit, and then we hire a sky-writer that writes, “Call MOSA....” Weeks later, we will finally get around to sending you flowers with the card inscribed, “Hey, it's not too late....give us a call.” Months later, you will call us and ask us why we billed you \$3 for a statement fee. It will dawn on us that we're looking for you. You finally hand in your paperwork, in the eleventh hour of suspension after we arrange for a pick-up near the alley at the north side Kwik Trip around 11pm. Everyone's happy!
- C. PANIC! It should have been back today! “I have to call MOSA first thing Monday morning; I hope they don't deny my certification. Oh my, this is serious, they gave me a deadline and it's not going to be back in time!! I will be denied certification! It can't get much worse than this! I will take this into the office and make sure they have everything they need.”
- D. Play Aretha Franklin, “Ain't No Way”.
- E. Send it in today.

2. Q: Your cat craps on your update application the day you HAD to get it into the mail to meet the “early bird deadline”. What do you do?

- A. Nothing. It was hell to fill out in the first place, wait for MOSA to write, reminding you to get it in, and then when THAT deadline passes, MOSA will write you again. You'll say that you thought you had mailed it or it must have gotten lost in the mail. At that point, MOSA will say, “Oh, don't worry about it just get it in”.
- B. Call MOSA and say, “Hey, you won't believe it....the cat crapped on the application this morning”...and ask for an extension
- C. Switch agencies because you just don't want to deal with it.
- D. You drop out of organics all together because you're just plain sick and tired of the paperwork.
- E. See question 1(B).

3. Q: You come into the office with your paperwork. You ask for a copy of last year's field histories. Your file is grabbed from the filing cabinet. We open up the file and what do we find?

- A. Everything is right where it belongs, in chronological order, including my October 2003 electric bill.
- B. Everything is right where it belongs, in chronological order, of course.

4. Q: The inspector's coming today! The baby's sick, a cow's out, and you don't have all of your paperwork together. What do you do?

- A. PANIC! When the inspector comes, drop to the floor. Pretend like nobody's at home.
- B. PANIC! Call the inspector up and tell him the baby's sick and it's really a bad day. Can we reschedule?
- C. PANIC! Rewind the tape and think about how you've managed the farm for the last year. You've done a good job, within the Standards of course, but you didn't take the time to write it all down. You go through with the inspection and realize that, “Yup, I really could have been more prepared than this.”
- D. PANIC! Rewind the tape and think about how you've managed the farm for the last year. You haven't kept up with your records; you haven't completed your last year's requirements, even though they were supposed to be completed when you received the letter, not waiting until the next inspection. And you really are not in the mood to have your nose rubbed into that fact. You are defensive with

-continued on page 13

the inspector and you're not happy.

E. Nothing. You get the records out on the kitchen table and you're set!

5. Q: I really didn't like my Inspector (for whatever reason). We just didn't "click". And for some of you, this is the second or third time you had the same Inspector, year after year and you wonder if the nightmare will ever end.

A. Throw gas on the fire!! Complain about it to your family, friends, organic neighbors, the lady in the check-out line, basically whoever will listen. Let everyone know what a jerk the inspector was. This will reflect badly on MOSA, and then on organics.

B. Don't say anything, endure the annual inspection and believe that you have no right to express your differences about the inspector. After all, MOSA is the authority and who are you to question *anything*?

C. Call MOSA and explain that you'd rather not have that inspector again in the future.

6. Q: When you're on the phone with a seed dealer, and he says that he has the organic seed that you're looking for, what do you do?

A. Hang up and thank God you never told them your name.

B. Buying non-organic seed instead of organic seed is one of the very few ways that an organic farmer can cut costs and really, does it even matter? Contact an organic buddy and share the tag for the inspection. The inspector will never know.

C. Call businesses that we typically do not look to as a source for organic seed such as Farm and Fleet, Wal-Mart, and Pioneer, thinking the odds are pretty good that you'll be talking to a salesman that says, "Organic what??" and you'll be able to hang up and have a "documented effort" to write down.

D. Buy one bag of organic seed and plant the rest of the 500 acres with your trusty non-organic, untreated, non-GMO seed.

E. Buy the seed because it's NOS 205.204(a) and it's the right thing to do.

F. Support the organic seed dealer. We are all part of the organic circle. The organic producers, the organic handlers, the organic input manufacturers, the organic feed suppliers, and the NOP accredited certification agencies. How can you expect to be supported as organic producers, if you do not support the seed dealers? Together we stand, divided we fall. You get the idea.

7. Q: When your organic buddy calls to say, "Hey, I've got an organic corn and alfalfa tag you can borrow for your inspection." Or, "Let's go halves on the organic seed and share the receipt and tags?" What do you do?

A. You say, "Alright!" You've saved yourself a bundle. You march through your inspection, with confidence, knowing that the inspector and MOSA will never catch on to this brilliant idea.

B. You say, "Alright!" You've saved yourself a bundle. You march through your inspection, with confidence, knowing that the inspector and MOSA will never catch on to this brilliant idea. After the inspection, you develop a conscience and turn yourself in.

C. You say, "I can't believe you're even asking me this! Of course not! Don't the Standards mean anything to you? How can you call yourself an organic farmer when you're cheating a system that's based on trust?"

D. You tell your buddy to not quit his day job because obviously, organics isn't for him.

8. Q: If you know someone's cheating in organics such as using treated seed, sharing seed tags, using prohibited input on their crops or livestock or feeding GMO corn to the cows, what do you do?

A. Keep your mouth shut.

B. Spread it like wild fire to your family, neighbors, and organic buddies and then eventually leak it to MOSA, in passing. We will ask you who the person is and you'll say, "Hey, I've got to live in the same community as these people, I can't give you a name."

-continued on page 15



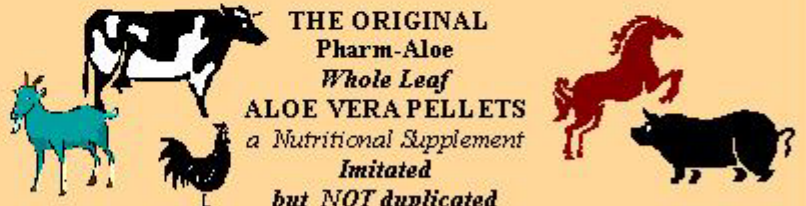
DISTRIBUTED BY:
Centers For Natural Living
N6324 County Road G
Scandinavia, WI 54977

Office: 715-467-2800
Order Desk: 800-279-0260
Cellular: 715-570-1566

Pharm-Aloe is the original creator of **Whole Leaf ALOE VERA PELLETS** with the formula based on the results of our research grant at the University of Wisconsin.

First introduced in 1994, **Pharm-Aloe Whole Leaf ALOE VERA PELLETS** have a proven track record that is unsurpassed for effectiveness.

Pharm-Aloe Whole Leaf ALOE VERA PELLETS was developed as a conditioner to maintain and improve the health and well being of all livestock, such as Dairy Cows and Calves, Beef Cows and Calves, Swine, Goats, Horses, Sheep, etc.



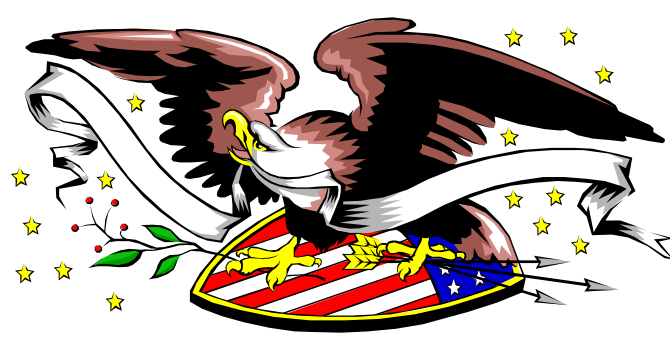
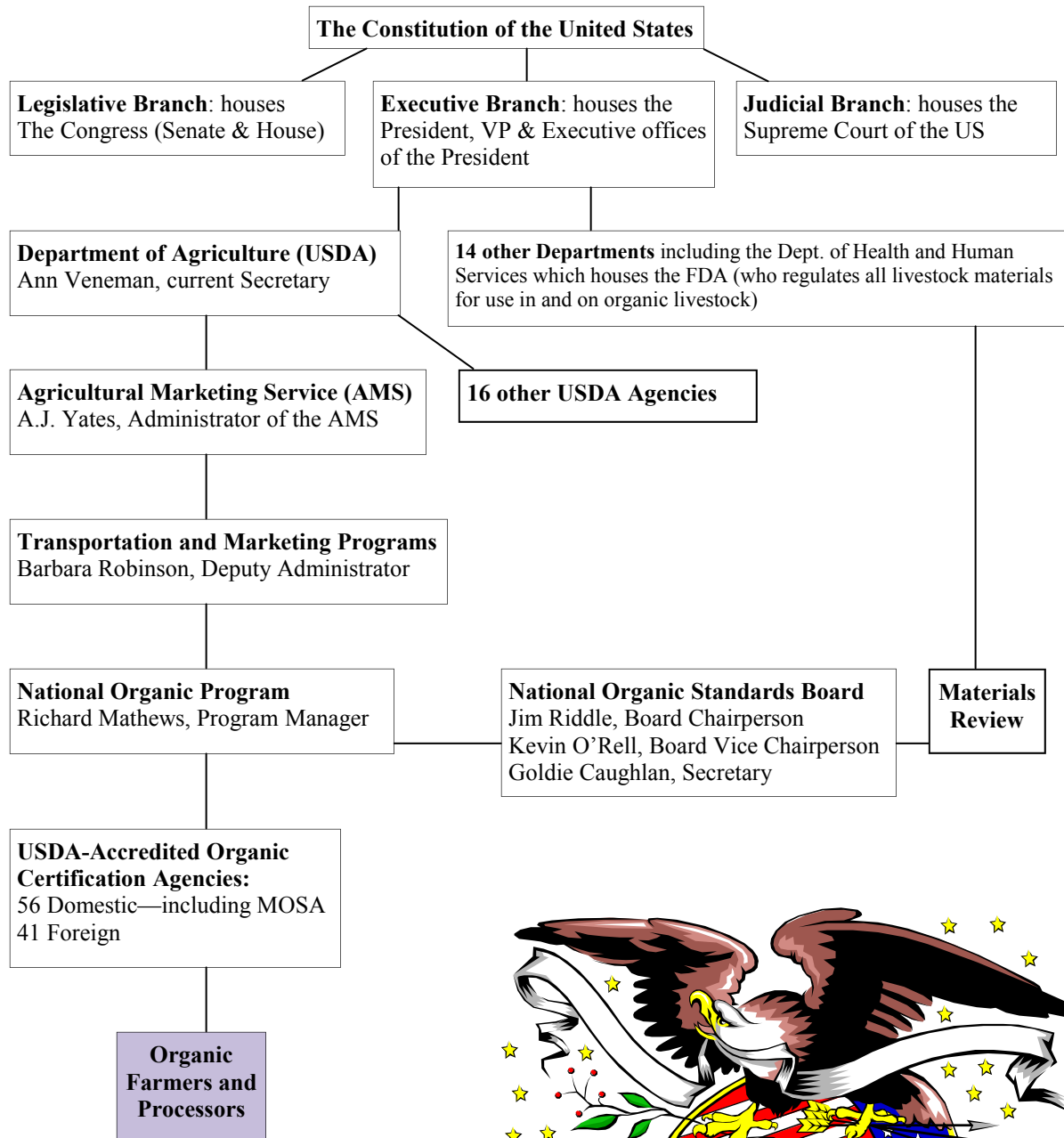
THE ORIGINAL
Pharm-Aloe
Whole Leaf
ALOE VERA PELLETS
a Nutritional Supplement
Imitated
but **NOT** duplicated

High Somatic Cell Count • Pneumonia • Scours • Pre & Post
Freshening • Cleaning • Off Feed • Shipping Fever • Mastitis

Little Bitty Me and Little Bitty You...

By Cate Irsfeld-Eddy, Certification Staff

As a person who likes to understand the whole picture, I have often wondered where we—as organic farmers and processors—stand in relation to the National Organic Program. I also wanted to see where the NOP really was located—buried within all the mind-numbing acronyms of our governmental system. So, I muddled around the Government of the United States endless web sites, in which I was tangled, stuck and just about eaten alive, but I came out with an understanding of how we truly fit into our national system.



C. Send in an anonymous complaint about what you know and mail it to MOSA because you believe in upholding the standards of organics. Why not? You pay the fees, endure the inspection, and succumb to the paperwork, because you believe it's the right thing to do and it gives you a value-added price to your product. If you play by the rules, why shouldn't the rest? Be sure you include enough details so that we know at least the producer and details enough to issue a non-compliance, otherwise, what's the point?

D. Mail in a signed complaint detailing what you know about the issue so that we get to the bottom of it, in less time than, and in this way everyone is best served, especially all of us who are not cheating and stand to lose the most if someone else is cheating.

9. Q: An organic seed dealer calls the MOSA office, again. He's concerned over the cheating and fraud that's going on in the organic community. He knows of many producers who don't buy his organic seed when it's available and he tells you about the calls where the organic producers hang up on him when he tells them that the organic seed is available. He knows of organic producers who harvest more organic crop than what they plant. The seed dealers wonder what the future holds for them and how they can stay in business, with fraud as their competition. What do you do?

A. You tell him that you can feel his pain and that you think Wal-Mart might be hiring.

B. You explain to him that as a certification agency, you are doing everything in your power to enforce the standards, invite him to send in a signed detailed complaint. Then you assure him that it's got to get better and that you hope he continues to stay in business because if he falls, the chain of dominos will eventually hit us all.

Answers:

1. (A) This will work.

(B) No, we're getting tired of this. Do you know what roses cost these days? Not to mention gas for the plane...

(C) Good grief, don't PANIC! Life provides us with enough reasons to panic, we don't need to look at certification as a big headache, just relax! A requirement of the NOS is that every letter requesting information has a deadline attached to it, but MOSA has a "friendly reminder" policy that includes a reminder letter and/or phone call before we issue a major non-compliance. If you come into the office, the worst thing that can happen at that point is that we'll be out of half & half for the coffee.

(D) Hit repeat and play Aretha until (e) is completed.

(E) This will work!

2. (A) Oh great, that's one of the reasons why I work 50-60 hours a week at the end of the year.....

(B) This really happened and we gave her an extension.

(C) Sounds easier at the time, but in the end it'll cost you more in the long run with the added expenses and mental anguish. Kind of like waiting until February to insulate the house.

3. (A) This only happened one time, OK? It was stuck in there for additional verification when the certification was completed in October

2003. That's my story and I'm sticking with it.

(B) Yes, of course this is the correct answer.

4. (A) Don't do this; it will cost you another inspection fee and you'll look pretty stupid lying on the floor.

(B) This is fine, but depending at what point your file is, it may cost you money. If the inspector's sitting at the end of your driveway, you will be charged for the gas and file preparation time up to that point. If we can pull the plug on the inspection before any expenses were incurred by the inspector, no harm done. If this is you, call the inspector right away to reschedule.

(C) This one sounds like my annual vow to be more prepared for Christmas, next year. Yes, it always turns out alright, but it would be more enjoyable and less stressful if you were prepared. Go through with the inspection and explain this to the inspector. I used to live in public housing. One of the hoops I had to jump through was an inspection twice a year. These of course, we're only scheduled when one of the kids was sick and the house was a mess. I couldn't stash the dirty dishes in the oven, because they inspected that too. But after enduring many inspections, I figured I needed to relax a bit because it always turned out alright, but I always vowed to be more prepared in the future. I solved the problem by moving.

(D) You may want to pull the plug on the inspection now, cut your losses, and reschedule. It's not easy being an inspector, but to also be the punching bag is not necessary. Get it together and reschedule if you can't pull it together

(E) Perfect answer! It'll be fine.

5. (C) Think of it like the public school teacher policy (in Wisconsin, anyways), you can choose what inspector you don't want, but you can't choose who you do want. MOSA will say, "Ok, you'll never see them again." You know, sometimes people just don't get along. It doesn't mean that someone did something wrong, it just means that some people don't get along.

6. (E) and (F)

7. (A) Sounds good, but we're on to you. We know that some organic seed tags have more mileage on them than a Greyhound bus driver and that some bags of seed have been through more hands than a Columbian drug deal. The party's over. For 2005, every producer will be required to have invoices for all seeds purchased. Then we will call your seed supplier and confirm the information. We will get the calculator out to determine if you purchased enough organic seed for your acres. If you got a minor non-compliance for this in 2004, you may get a major non-compliance this year and would not be certified until you account for all of the seeds planted.

(B) This has happened.

(C) The organic management of your operation is proven by all of this burdensome paperwork. How else can it be done? What are the choices? Only a couple of options come to mind. We could put video cameras in your fields and monitor you like a mall security guard. Or we could just mail everyone a Bible. You could swear on it and mail it back. The file clerk would probably like this idea; she'd only have 673 Bibles to file instead of mounds and mounds of papers.

8. (A) Oh, great, this is why there is less than 100% organic integrity in the marketplace right now.

(B) Yup, this will do a lot of good. Better yet, my favorite is, "I can't tell you, we go to the same church."

(C) Rarely does this work. The anonymous complaint typically does not include enough detail because the author doesn't want to be identified.


(D) Yes! When we have to spend an inordinate amount of time on anonymous complaints, please realize that it costs MOSA more time and money, flailing, spending hours of unnecessary labor costs, which you pay for in the form of certification fees.

9. (B) A seed dealer called about six months ago sharing his war stories. He was discouraged. He said that since the implementation of the

NOS on October 21, 2002, their business has dropped dramatically each year. If things didn't turn around next year, they could be out of business. I tried calling him last week to see how it's been going. Must not be too good. I was told he quit and was in another line of work now.

Organics is like everything else. It's a reflection of society. Basically an imperfect system. The verification of the organic system is based on your documented organic practices and our trust in you that you are following the standards. Outside of the annual inspection, you're totally on your own. I urge you all to uphold the integrity of organics and to do the right thing by being honest and truthful in your organic management practices.

Remember, we're all in this together, the organic consumer, the USDA, the organic certification agencies, the organic handlers, the organic producers, the organic seed distributors, the organically-acceptable input manufacturers, the organically-acceptable livestock input manufacturers, the organic feed mills, the organic retailers and warehouses, the organic grower groups, down to your local quarry that supplies your naturally-mined lime. All of us play a part in the success or failure of organics. We need to begin supporting one another, *with no exception*. Especially the organic seed distributors. Otherwise, how can we expect the consumer or the next guy in the chain to pay the value-added price for the (almost) organic product when we don't?



Crystal Creek™
the natural choice for agriculture

Nature's Finest Livestock Health Programs

A full line of nutraceuticals and livestock nutritional programs for organic, grazing, sustainable and conventional operations in dairy, beef, calves, swine, goat, sheep, poultry and horse production.

Experienced Staff & Excellent Service:
Livestock Nutritionists
Calf Specialists
Large Animal Veterinarians
Cow Tales Newsletter
Crystal Creek Catalog

Crystal Creek
A Division of Leiterman & Associates, Inc.
N9466 Lakeside Road, Trego, WI 54888
Call Toll Free: 1-888-376-6777
www.crystalcreeknatural.com



Calendar of Events

throughout the Midwest. For more info email heather.amundson@we.usda.gov

January

January 6: Low Linoleic Soybeans and Other Value Added Opportunities, in Iowa, Cedar Rapids. Jim Jensen, ISU Extension farm Management field Specialist. Contact Jim Fawcett for more info at Fawcett@iastate.edu or 319-337-2145

January 9-11: WI Fresh Market Fruit and Vegetable Growers Conference, Stevens Point, WI contact Anne Maenner, 920-478-3852 or www.waga.org/hot.html

January 12-13: Illinois Organic Production Conference, providing farmers with practical, science-based information on organic production and certification. Holiday Inn, 8 Traders Circle, Normal, IL. Call 309-452-8300 for more info.

January 14-15: Practical Farmers of Iowa Conference, Holiday Inn, Des Moines, IA for more info www.practicalfarmers.org or contact Sandra Trca-Black at 515-232-5661

January 15: From Farm to Fork Workshop, Joliet Junior College, Joliet, IL. For more info, contact Rich Schell, 847-404-2950 or email schellville@excite.com

January 18-19: Organic Agriculture: opportunities for Family Farms in Kansas: Manhattan KS. For more info, call Tracy Ivy at 785-532-1414

January 19-20: Midwest Farm Show, La Crosse Center, La-crosse, WI

January 19-21 Ohio Fruit and Vegetable Growers Congress and Ohio Direct Marketing Conference, Toledo, Ohio. This event includes specific educational sessions, general sessions, and a trade show. www.ohiofruit.org

January 19-21: Mid-America Fruit Growers Conference, Excelsior Springs, MO. For registration form and program schedule, go to www.midamericafruit.org

January 20-22: Illinois Specialty Crops Conference, Crowne Plaza Hotel, Springfield, IL. For more info visit www.web.extension.uiuc.edu/regions/hort

January 21-22: Minnesota Organic & Grazing Conference, St. Cloud, MN. For more info, call 651-296-1277

January 22: Farm Direct Conference, Waukesha, WI. For more info contact peg.reedy@ces.uwex.edu or call 262-741-3181

January 22-24: Kansas Graziers Association's Annual Winter Grazing Conference, Assaria, KS. Contact Mary Howell at 785-363-7306

January 24- Starting Plants From Seed, Sedgwick County Extension Center, 7001 W. 21st North, Wichita, KS. 6:30 pm contact Michele Brown at 316-722-7721 x 138 for more info

January 27-28: Iowa Fruit & Vegetable Growers Association Winter Meeting, Marshalltown, Iowa www.iafruitvegetablegrowers.org/upcoming_events.html

January 28-29: Midwest Value added Agriculture Conference: Bringing Profit Back to the Farm. Eau Claire, WI A two-day event designed to inspire and expand the horizons of farmers

January 29: 2nd Annual Urban Agriculture Symposium. Exploring Economic and Community Opportunities through Urban Agriculture. 8:30-3:00pm, Garfield Park Conservatory, 300 N. Central Park, Chicago, IL. For more info contact Aida Peralta at 773-768-7779

January 29: Northern Michigan Small farm Conference, Gaylord, Michigan. 8:30 to 5:00 Speakers include Joel Salatin and Dr. John Ikerd. www.msue.msu.edu/iac/farmconf

January 31: Spring and Summer Blooming Bulbs, Sedgwick County Extension Center 7001 W. 21 st North, Wichita, KS. 6:30 pm registration. Contact Michele Brown at 316-722-7721 x 138 for more info

February

February 5: Chicago Farmers Farmland Investment Fair, Joliet Junior College, Joliet, IL for more info call Jeff Martin at 217-792-3934 or Chicago Farmers at 312-726-4030 or www.chicagofarmers.org

February 7: Growing Fruit Trees, Sedgwick County Extension Center, 7001 W. 21st North, Wichita KS. Contact Michele Brown at 316-722-7721 x 138

February 9-12: Annual Advanced Organic Vegetable Production Workshop, East Troy, WI for more info contact mfa@michaelfieldsagainst.org or 232-642-3303

February 10-11: 2005-26th Annual Winter Conference, sponsored by the Northern Plains Sustainable Agriculture Society, Rankota Inn, Aberdeen, SD. For more info www.npsas.org/upcoming.html or call 701-883-4304

February 11-12 Northern Plains Sustainable Agriculture Society Winter Meeting, Aberdeen, South Dakota. For more info call Theresa Podool, 701-883-4304 or tpnpsas@drtel.net or www.npsas.org

February 15: Facts to Increase New Tree Growth, Sedgwick County Extension Center, 7001 W. 21st North, Wichita, KS Contact Michele Brown at 316-722-7721 x 138 for more info.

February 18-20 Kansas Garden Show: Kansas Expocentre, Topeka, KS for more info call 785-235-1986

February 24-26: Organic University and 16th Annual Upper Midwest Organic Farming Conference, La Crosse, WI. For more information, call 715-772-3153 or info@mosesorganic.org

February 25-27: Manhattan Area Garden Show, CiCo Park, Pot-terf Hall, Manhattan, KS. Free Admission for more info 785-537-6350

March

March 1: Illinois Small Fruit and Strawberry Schools, Holiday Inn, Mt. Vernon, IL for more info 618-695-2444

March 5-6: 2005 Annual OEFFA Conference: Johnstown, Ohio. Website, Ecological Food and Farm Association for more info 614-421-2022

EVENTS IN RED DENOTE MOSA ATTENDENCE.



Classifieds

For Sale

For Sale: Elsie's Farm is a 120-acre sustainable farm located in west-central Wisconsin with fields, pasture, woods, and original farmhouse with many outbuildings. Formerly certified organic by MOSA, presently in transition. Soil is sandy loam and excellent water. Established CSA, farmer's markets and strong restaurant accounts serving the Twin Cities. Community of CSA farmers nearby. See our website at www.elsiesfarm.com for more info or call 715-949-1738.

For Sale: Holstein/Jersey cross springing heifers due soon. AI sired. Call 507-789-6679.

For Sale: 25 Holstein cows, MOSA certified. Call Bill at 715-267-6549.

For Sale: 6 row flame cultivator without LP tank. Call 507-433-9557.

For Sale: Flock of around 50 conventional white-faced ewes and Rambouillet Ram. Bred for March so 2005 lamb crop certifiable if you buy soon! Ewe lambs also available. Phone 608-624-5714.

For Sale: OCIA certified beef cows bred for March/April calving. Black cows bred to Angus bull. \$850. Call 608-637-3034.

BOYD FEED & SUPPLY: MOSA CUSTOM MIX BAG AND BULK FEEDS. ORGANIC FERTILIZER, HI CAL LIME. BOYD, WI 715-667-3898

For Sale: MOSA certified Jersey heifers. Call Brian Voelker, 715-664-8827.

Certified Organic Seeds

from Albert Lea Seed House, Brunner's, NC+ Organics, Welter Seed & Honey Co., and more. Corn, soybeans, grasses, alfalfa, specialty crops and others. Also: certified organic cleaned bin-run small grain seeds.

Golden Grains

Edwin Knoll
8244 Jackrabbit Ave.
Sparta, WI 54656
Phone: 608-269-5150
Fax: 608-269-2150

For Sale

Anyone interested in bull calves coming in the first 5 months of 2005? Jersey and Jersey/Holstein cross. Prices reasonable, MOSA certified. Contact Andrew H. Swarey, 3164 Draper Rd, Dorchester, WI 54425.

For Sale: 4 row transplanter, currently spaced at 12", Mechanical 5000, less than 15 hours use, paid \$10,000, asking \$8,500. Call Chris at 608-712-1585.

For Sale: Small herd of organic Brown Swiss cows need to relocate by 1/1/05. 17 milking. Open to all options. Buy, rent, share farm, sell or lease cows. 608-625-4024.

For Sale: Certified organic seed: Jim oats \$6.00/bu bagged or \$5.00/bu bulk. Iowa 2017 & Iowa 2053 soybeans \$24.00/bag plus royalties. 102 and 106 day seed corn \$110.00/bag. 10% discount by Feb. 1st, 2005. Call Tim at 815-449-2285. Dakota, IL.

For Sale: Seed Potatoes: Certified organic and certified by the State of WI Potato Seed Program, your only assurance of quality seed. For varieties/prices and info, call David Perkins at 608-767-3860; website – <http://potato.vermontvalley.com> or e-mail potato@vermontvalley.com

For Sale: 45 organic seasonal crossbred milk cows. Started with Jerseys. 1st crossed with Milking Shorthorn. 2nd crossed with Normandy/Holstein. 3rd crossed with Dutch Belted. I have been developing this herd for over ten years. Somatic cell usually under 250,000. These cows have not had grain since December 17, 1998. Since 1998 I have had one retained placenta and no other vet visits. \$2000 per head. Herd will start to calve on March 1st. Call Wayne Tredinnick at 608-822-6939.

For Sale: Alfalfa hay '04, 3'x 3' x 7' bales, MOSA certified. Can deliver. Call Marv Timm, Alma, WI 608-685-3345.

Farmers looking for a way to save money in nitrogen cost AC Greenfix is a legume that produces a vast amount of nitrogen in 60 to 70 days, up to 200#. Better advantages than commercial fertilizers for crops for 2 to 3 years after. One of the best soil-improving legumes, resistant to drought, heat, and resistance to many insects and diseases. Excellent forage to green manure crop, or inter-seed into alfalfa fields. FVO certified. Contact 1-218-698-4222.

MOSA Disclaimer:

MOSA does not guarantee that all products posted are certified organic, and MOSA is not responsible for the accidental purchase of non-organic products through the use of this newsletter. Always verify the organic status of any product before purchasing or using.

Wanted

Wanted: Farmers in Nebraska thinking about certifying dairy, slaughter, and/or buffalo. Contact Jerry Gotschall, HC 68, Box 18, Atkinson, NE 68713. Phone: 402-925-2431. E-mail: jkgotschall@elkhorn.net

Wanted: For dairy farmers looking for certified organic grain to contact Paulette Bradley, Coordinator, Wisconsin Organic Marketing Alliance. Call 608-427-2201 or mcdonald@mwt.net

Wanted: Grain producers looking for a market for their grain to contact Paulette Bradley, Coordinator, Wisconsin Organic Marketing Alliance. Call 608-427-2201 or mcdonald@mwt.net

Wanted to Rent: Certifiable pasture for 25 head and 10-20 acres of certifiable tillable land. NW of Viroqua, WI. 4 miles on Cty B. Ed Marks, Westby, WI. 608-634-2563.

Wanted: Looking for cattle producers interested in organically certifying 2005 calf crop or wanting to graze certified organic yearlings. We have Nebraska sandhill ranchland grass and forage, good water, and care. MOSA certified. Up to 1000 cows or 1500 yearlings. 402-244-5339 or email jkgotschall@elkhorn.net.

Wanted: Looking to buy a farm in Calumet or Fond du Lac county in Wisconsin. Write to: Henry Nisley, 1398 hwy E, Livingston, WI, 53554 or call 608-943-6747 and leave message for Henry.

Opportunities

For Rent: Approximately 20-35 certifiable organic acres available to rent. Town of Dover, Buffalo County. Email RogKendo@hotmail.com



Organic Specialists

Cashton Farm Supply, Ltd.

199 Front Street, Cashton, WI 54619

- ▶ Feed Products
 - Protein & Grain
 - ▶ Poultry Rations
 - Starter-Grower-Layer
 - ▶ Livestock Vitamins & Minerals
 - ▶ Poultry Pre-mixes
 - ▶ *Natural* Fertilizer
 - Lawn-Garden-Greenhouse
 - And Crop Protection
- All Products are Approved for Organic Use

CFS
Quality Ag Products

Custom Blends
Ingredients Blended
And Labeled to Your
Special Needs

CFS Specialties, Inc.

(800) 822-6671 or (608) 654-5123

E-mail: organic@cfspecial.com

Website: www.cfspecial.com

For Sale

For Sale: Springing cows and heifers, Holstein/Brown Swiss/Jersey crossbred. Contact 952-212-9506.

For Sale: Holstein springing heifer, AI bred. Call 608-732-7945 or 608-943-6844.

For Sale: Oat straw '04, 3' x 3' x 7' bales, MOSA certified. Call Marv Timm, Alma, WI. 608-685-3345.

For Sale: Organic oat/alfalfa hay in small square bales, 125 RFV, certified by Oregon Tilth, \$100/ton, can deliver. Paul/Heidi Daugherty, Wolverton, MN 218-995-2428.

For Sale: Must Sell: 3 x 3 x 7 bales of alfalfa with a touch of orchard grass. 100 1st cutting, 190 2nd cutting, and 95 3rd cutting. All MOSA certified organic, stored inside. Call for tests and pricing. Crazy Acres 507-879-3541

For Sale: 3rd crop hay, round bales-alfalfa with perennial rye.23% protein. Culver Farms, Inc. 715-568-3758





Staff Member of the Month

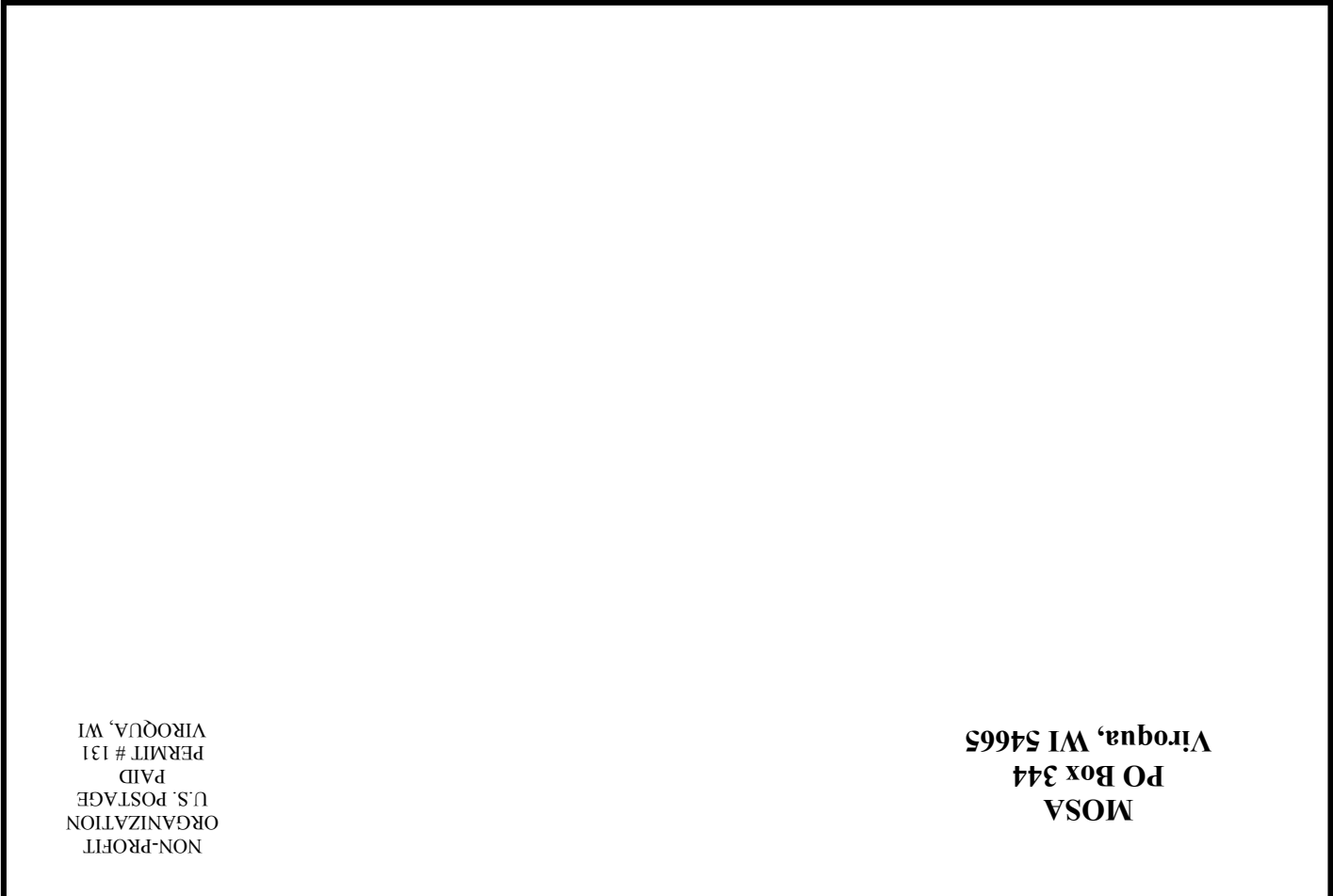
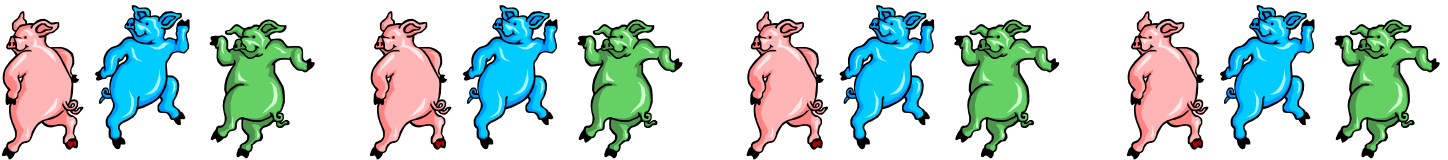
Cate Irsfeld-Eddy, Certification staff

You can tell by her laugh, sweet voice and sympathetic sighs that Cate is a warm hearted soul. When you add 'mega'-organized, and 'computer'-office ready, you've got Cate! Cate is on the certification team and spends hours looking over your files, making sure that everything is there that's needed to do an accurate review of your operation. She happily takes your calls when you're looking for a product acceptability or other certification related information. She also is in the forefront when it comes to updating all the MOSA forms from year to year.

Cate and her husband Mat moved onto their 70 acre farm in the coulee region in 2001. Here they have followed their dream and love of farming and started a CSA with several other young farmers. They raise small grains, mixed vegetables and pastured pork.

Cate has the patience of a saint with her co-workers and with associates that call and ask her question after question. She is never too busy to help anyone who has a need. She has that special glow about her that lots of people wish they had and very few do.

We are so happy that she is one of the team here a MOSA and if you've talked with her, I'm sure you are too!



NON-PROFIT
ORGANIZATION
U.S. POSTAGE
PAID
PERMIT # 131
VIROQUA, WI

MOSA
PO Box 344
Viroqua, WI 54665